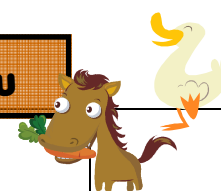
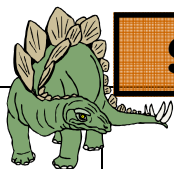


# September 2008 -Smarty Pants Playschool Menu



Sun	Mon	Tue	Wed	Thu	Fri	Sat
<p><b>The Rainforest</b></p>	<p><b>1 CLOSED</b></p>	<p><b>2 B:</b> Bagel w/ cc &amp; Bananas  <b>MS:</b> <b>Rainforest Tasting Party</b> (Mangos, Papaya &amp; Coconut w/ animal crackers)  <b>L:</b> Grilled Cheese, Peaches &amp; Cucumbers  <b>AS:</b> Goldfish crackers &amp; Apples</p>	<p><b>3 B:</b> Yogurt w/ Fresh fruit &amp; Cheerios  <b>MS:</b> Pretzels &amp; Oranges  <b>L:</b> Turkey Sandwich, Zucchini sticks &amp; Honey Dew Melon  <b>AS:</b> <b>Forest Floor Fallen Logs</b> (Celery w/tuna &amp; poppy seeds)</p>	<p><b>4 B:</b> Blueberry Muffins &amp; Oranges  <b>MS:</b> Zucchini Bread  <b>L:</b> Chicken fettuccini , Broccoli w/cheese &amp; Grapes  <b>AS:</b> <b>Rainforest Mix</b> (Coconut, chocolate chips &amp; bananas)</p>	<p><b>5 B:</b> Cold Cereal &amp; Apples  <b>MS:</b> <b>Chocolate Bananas</b> (frozen bananas rolled in chocolate &amp; graham crackers)  <b>L:</b> Lasagna &amp; Salad w/ranch  <b>AS:</b> Ritz Crackers &amp; Cheese</p>	<p><b>6</b></p>
<p><b>7 Body Parts</b></p>	<p><b>8 B:</b> Waffles &amp; Bananas  <b>MS:</b> <b>Mini People</b> (PB&amp;J)  <b>L:</b> Mac n' Cheese, Green beans &amp; Peaches  <b>AS:</b> Ants on a Log</p>	<p><b>9 B:</b> French Toast &amp; Oranges  <b>MS:</b> Animal crackers &amp; Yogurt  <b>L:</b> <b>Pizza Heads</b> (English muffin pepperoni pizzas) &amp; Salad w/ ranch  <b>AS:</b> Apples &amp; Peanut Butter</p>	<p><b>10 B:</b> Blueberry Pancakes  <b>MS:</b> Graham crackers &amp; Apple-sauce  <b>L:</b> Chicken nuggets, Peas, Carrots &amp; Pears  <b>AS:</b> <b>Thumb Print Cookies</b> (mini cookies w/ peanut butter &amp; jelly filling)</p>	<p><b>11 B:</b> Oatmeal &amp; Bananas  <b>MS:</b> <b>Cereal Kids</b> (pretzels, cheerios &amp; bananas)  <b>L:</b> Tuna Sandwich, Sweet potato French fries &amp; Apples  <b>AS:</b> Cottage cheese &amp; Tomatoes</p>	<p><b>12 B:</b> English Muffin &amp; Oranges  <b>MS:</b> Frozen go-gurt w/cheerios  <b>L:</b> Cheese crisps, refried beans &amp; corn  <b>AS:</b> <b>Rice Cake Faces</b> (peanut butter, cheerios &amp; raisins)</p>	<p><b>13</b></p>
<p><b>14 Dinosaurs</b></p>	<p><b>15 B: Dinosaur Egg Oatmeal</b> &amp; Bananas  <b>MS:</b> Goldfish crackers &amp; Applesauce  <b>L:</b> Tuna Sandwich, Sweet potato French fries &amp; Apples  <b>AS:</b> Cottage Cheese &amp; Tomatoes</p>	<p><b>16 B:</b> Banana bread &amp; Fresh Fruit  <b>MS:</b> Apples &amp; Cheese  <b>L:</b> Spaghetti &amp; Zucchini sticks  <b>AS:</b> <b>"Digging up Dinosaurs"</b> (Chocolate Chip Cookies &amp; Milk)</p>	<p><b>17 B:</b> Blueberry Muffins &amp; Oranges  <b>MS:</b> <b>Dinosaur Egg</b> (watermelon &amp; pretzels)  <b>L:</b> Turkey Sandwich, Cucumbers &amp; Melon  <b>AS:</b> Ritz Crackers &amp; Cheese</p>	<p><b>18 B:</b> Bagel w/ cc &amp; Apples  <b>MS:</b> <b>Stegosaurus Sandwiches</b> (PB&amp;J w/ tortilla chips &amp; bananas)  <b>L:</b> Grilled Cheese, Watermelon &amp; Cinnamon Carrots  <b>AS:</b> Cucumbers &amp; Hummus</p>	<p><b>19 B:</b> Yogurt w/ Fresh fruit &amp; Cheerios  <b>MS:</b> <b>Edible Volcano</b> (chocolate pudding, sugar cones, strawberry jam &amp; dinosaur fruit snacks)  <b>L:</b> Lasagna &amp; Salad w/ranch  <b>AS:</b> PB&amp;J</p>	<p><b>20</b></p>
<p><b>21 Farm Animals</b></p>	<p><b>22 B:</b> Banana bread &amp; Fresh Fruit  <b>MS:</b> <b>Chicken Feed</b> (cheerios, sunflower seeds, popcorn &amp; raisins)  <b>L:</b> Spaghetti &amp; Zucchini sticks  <b>AS:</b> Apples &amp; Cheese</p>	<p><b>23 B:</b> Cold cereal &amp; Bananas  <b>MS:</b> <b>Homemade Butter</b> &amp; Zucchini bread  <b>L:</b> Chicken nuggets, Peas &amp; Carrots &amp; Pears  <b>AS:</b> Rice pudding</p>	<p><b>24B:</b> Waffles &amp; Fresh Fruit  <b>MS:</b> Animal Crackers &amp; Yogurt  <b>L:</b> <b>Pigs in a Blanket</b> (Hot Dogs) w/ baked beans &amp; Tator Tots  <b>AS:</b> Ants on a Log</p>	<p><b>25 B: Farm Breakfast</b> (Bacon, Eggs, Toast &amp; Oranges)  <b>MS:</b> Animal crackers &amp; Yogurt  <b>L:</b> Mac n' Cheese, Green beans &amp; Peaches  <b>AS:</b> Apples &amp; Peanut Butter</p>	<p><b>26 B:</b> French Toast &amp; Apples  <b>MS:</b> <b>"Pig Slop"</b> (chocolate pudding w/ cheerios)  <b>L:</b> Chicken fettuccini , Broccoli w/cheese &amp; Peaches  <b>AS:</b> Cheese sticks &amp; Pretzels</p>	<p><b>27</b></p>
<p><b>28 Fire Safety</b></p>	<p><b>29 B:</b> Bagel w/ cc &amp; Banana  <b>MS:</b> <b>Fire Truck Sandwiches</b> (Toast w/cc &amp; Pretzels)  <b>L:</b> Grilled Cheese, Peaches &amp; Zucchini French Fries  <b>AS:</b> Goldfish Crackers &amp; Applesauce</p>	<p><b>30 B:</b> Blueberry Pancakes  <b>MS:</b> <b>Flames</b> (red &amp; orange jell-o w/ whipped cream &amp; crackers)  <b>L:</b> Cheese crisps, refried beans &amp; corn  <b>AS:</b> Rice cakes &amp; peanut butter</p>	<p>Every breakfast and lunch is served with 1% milk.  Morning snack is served with 100% fruit juice.  Afternoon snack is served with their choice of milk or water.</p>			